



Filming at Tower Bridge

London's Defining Landmark



CITY OF
LONDON
TOWER
BRIDGE





Benefits to filming at Tower Bridge



Iconic Location

There isn't a better setting for your classic London shot. We also have a range of lesser-known locations to capture atmospheric scenes.



Liaison Manager

From enquiry to shoot, our Marketing Team will help guide you through filming at Tower Bridge.



On-site Security

Tower Bridge is under 24/7 surveillance, for peace of mind and security. We also regularly liaise with external security and marshalling teams for filming and events on the Bridge.



Tower Bridge Experts

We have a range of Curators, Engineers and representatives available to share their knowledge in interviews.



On-site Catering

Our caterers, Social Pantry, are available for filming shoots, wrap parties, launch events and press junkets.



On the Bridge

Iconic location

From road level, you can get that seminal shot of the London landmark, including its beautiful decorative stonework and steel.

See the great views along the river to east and west and capture the Bridge opening for vessels to sail through.

Set the scene with a shot of red buses and taxi cabs, capture busy morning commuters or use the Bridge as a backdrop for a quintessentially London photography shoot.





See the great views along the river to east and west. Set the scene with a shot of red buses and taxi cabs, capture busy morning commuters.







The Walkways show wonderful views of London and provide a light and airy feel.



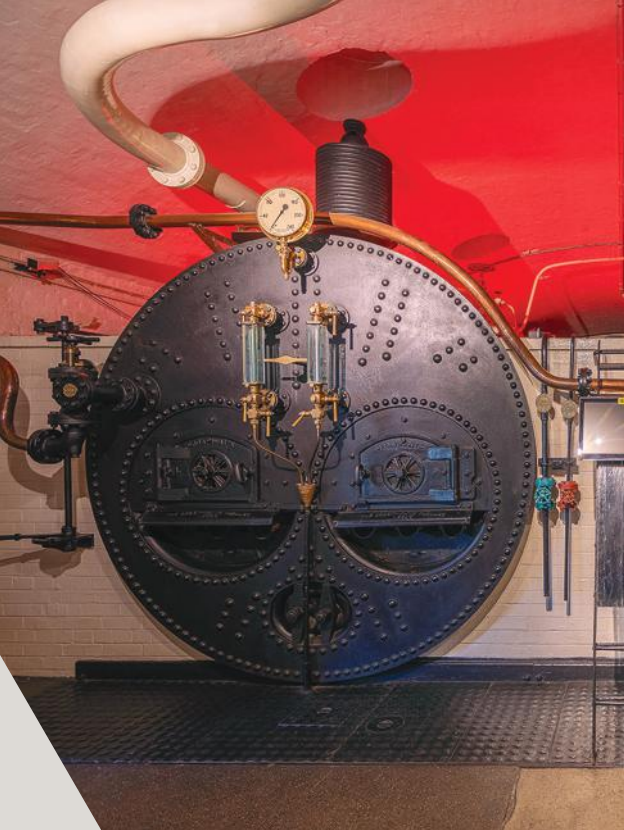
The Walkways

A high-level experience

The high-level Walkways have a light and airy feel and provide some of the most breathtaking panoramic views of London.

The West Walkway looks up-river with views of HMS Belfast, Tower of London, St. Paul's Cathedral and London Bridge. The East Walkway looks down-river with views of the city wharfs including Canary Wharf.

Each Walkway contains a spectacular Glass Floor, 42m above the Thames, which looks down to the road and river below.



The Engine Rooms

An engineering marvel

The Engine Rooms house the original Victorian steam engines which were used to raise Tower Bridge until 1976 and can still run individually on compressed air. The Engine Rooms contain original machinery and tools as well as the sounds of the engines.

It is an atmospheric location with working engines, low-level lighting and open brick walls. There are also interesting engineering instruments and equipment, which make for a great Dickensian backdrop.





It is an atmospheric location with working engines, low level lighting and open brick walls.

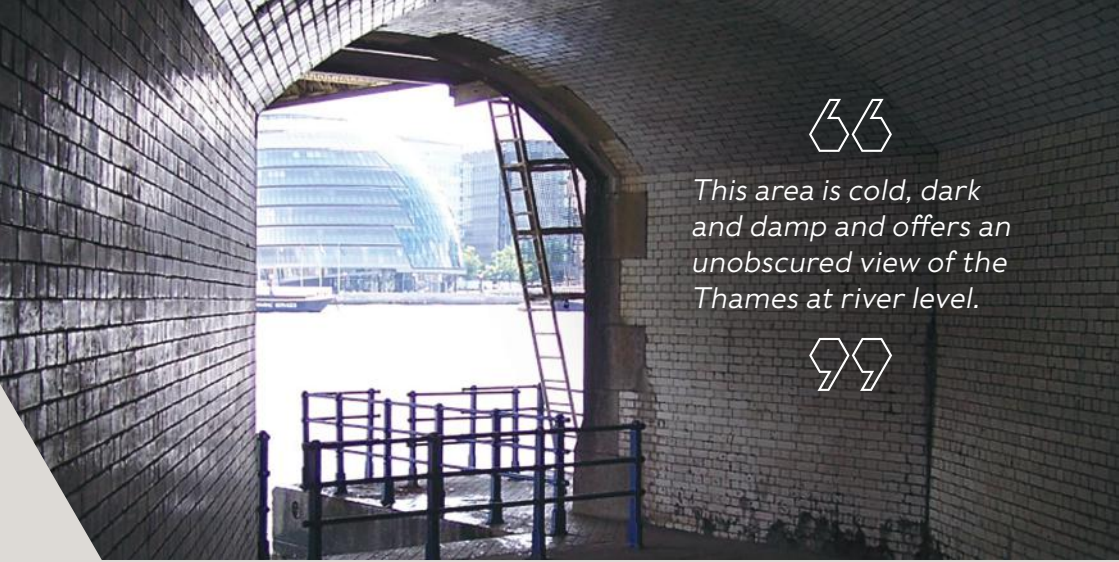






There isn't a better setting for your unmistakable London shoot. See the great views along the river to east and west and capture the Bridge opening for vessels to sail through.





This area is cold, dark and damp and offers an unobscured view of the Thames at river level.



Victorian London

An industrial feel

Tower Bridge has many spaces to provide an atmospheric location, with Victorian engines, brick walls and leaded windows.

The Towers

The North and South Towers of Tower Bridge contain Victorian spiral staircases showcasing the original brown colour paintwork. There are also multiple landings with large windows and original and salvaged fixtures. You can find a converted gas lamp in the second level space of each Tower.

The Control Rooms

There are two Control Rooms available for filming. The Victorian Control Room was used when the Bridge was powered by steam and contains the original control

mechanisms including levers, dials and handles. The new Control Room has been used from the 1970s to today and contains computers, display screens and a joystick.

Dead Man's Hole

Dead Man's Hole is located under the north-east side of the Bridge, with steps leading directly down to the Thames. This area is cold, dark and damp and offers an unobscured view of the Thames at river level. It is perfect for capturing an eerie or underground ambience.

Portland Wharf

Portland Wharf is situated on the bank of the river Thames on the south-east side of the Bridge. It is a wide-open space that offers a great view of Tower Bridge and the Thames in the background.





The space could be made to simulate any number of settings such as a luxury apartment or office and has a high ceiling.



Green rooms and office spaces

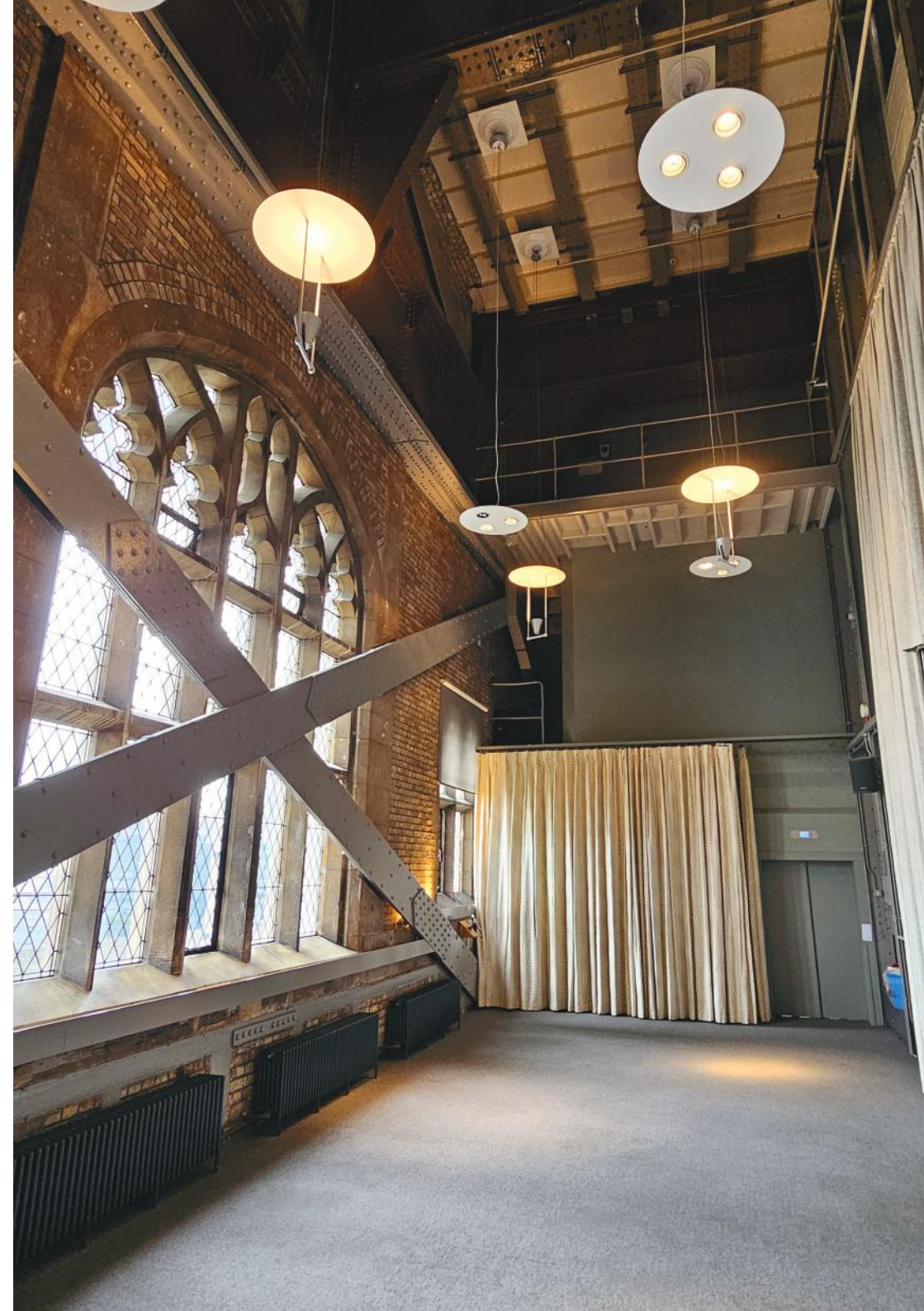
Tower Bridge has spaces on-site available to be used as green rooms, storage equipment, and office or apartment-like filming set ups.

North Tower Lounge

Situated halfway up the North Tower of the Bridge, the North Tower Lounge is a big space decorated in a modern informal style. It has large leaded windows along one wall that give a unique perspective of the Bridge and views out to South London. The space could be made to simulate any number of settings such as a luxury apartment or office and has a high ceiling.

The Bridge Master's Dining Room

The Bridge Master's Dining Room was originally the Bridge Master of Tower Bridge's living accommodation. It is a self-contained flat, high up in the South Abutment, overlooking the Bridge. It is accessed via a wooden door on the Bridge and an unusual, narrow staircase or a very small two-person double gated lift. It comprises of a series of rooms completely renovated in traditional Victorian style.





I recently had the opportunity of filming on Tower Bridge, which is without doubt one of London's most iconic Locations!

The whole experience was great, and the Bridge team were super helpful in making sure the brief was met.

I look forward to working with Tower Bridge in the near future.



Locate Productions



Tower Bridge Road, London SE1 2UP

marketing@towerbridge.org.uk
towerbridge.org.uk/filming



#insidetowerbridge